

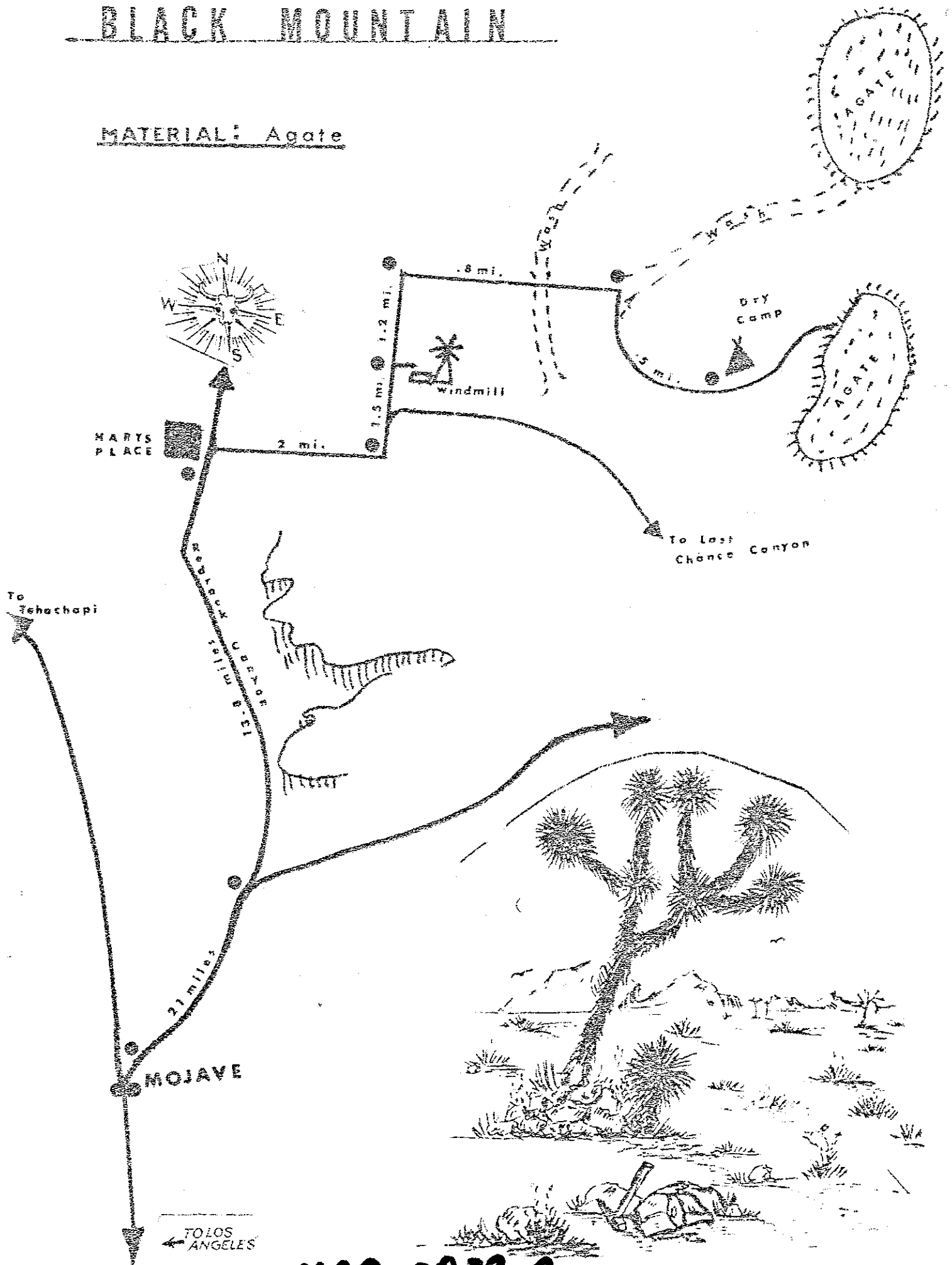
MAP 0029A

PINK MARBLE- BALLARAT AREA 8

X HWY 14
MOJAVE

BLACK MOUNTAIN

MATERIAL: Agate

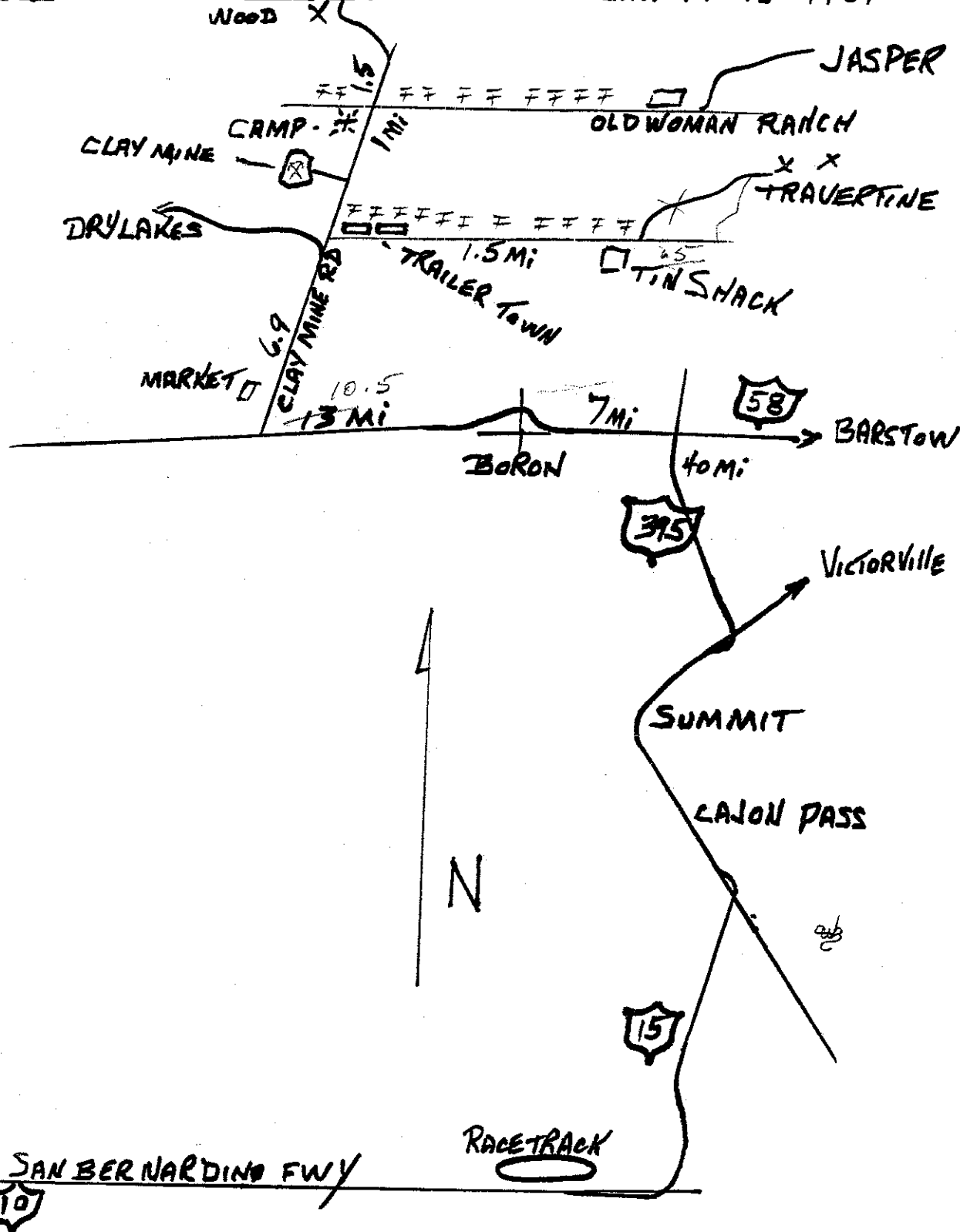
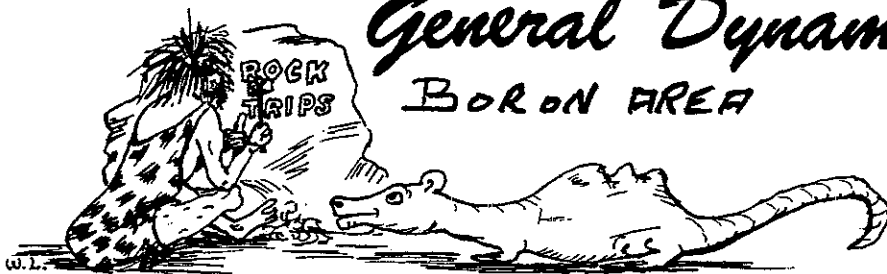


MAP 0032 A

General Dynamics

BORON AREA

ROCKHOUNDS
FIELD TRIPS
THIRD WEEK END
JAN 17-18-1981



POMONA

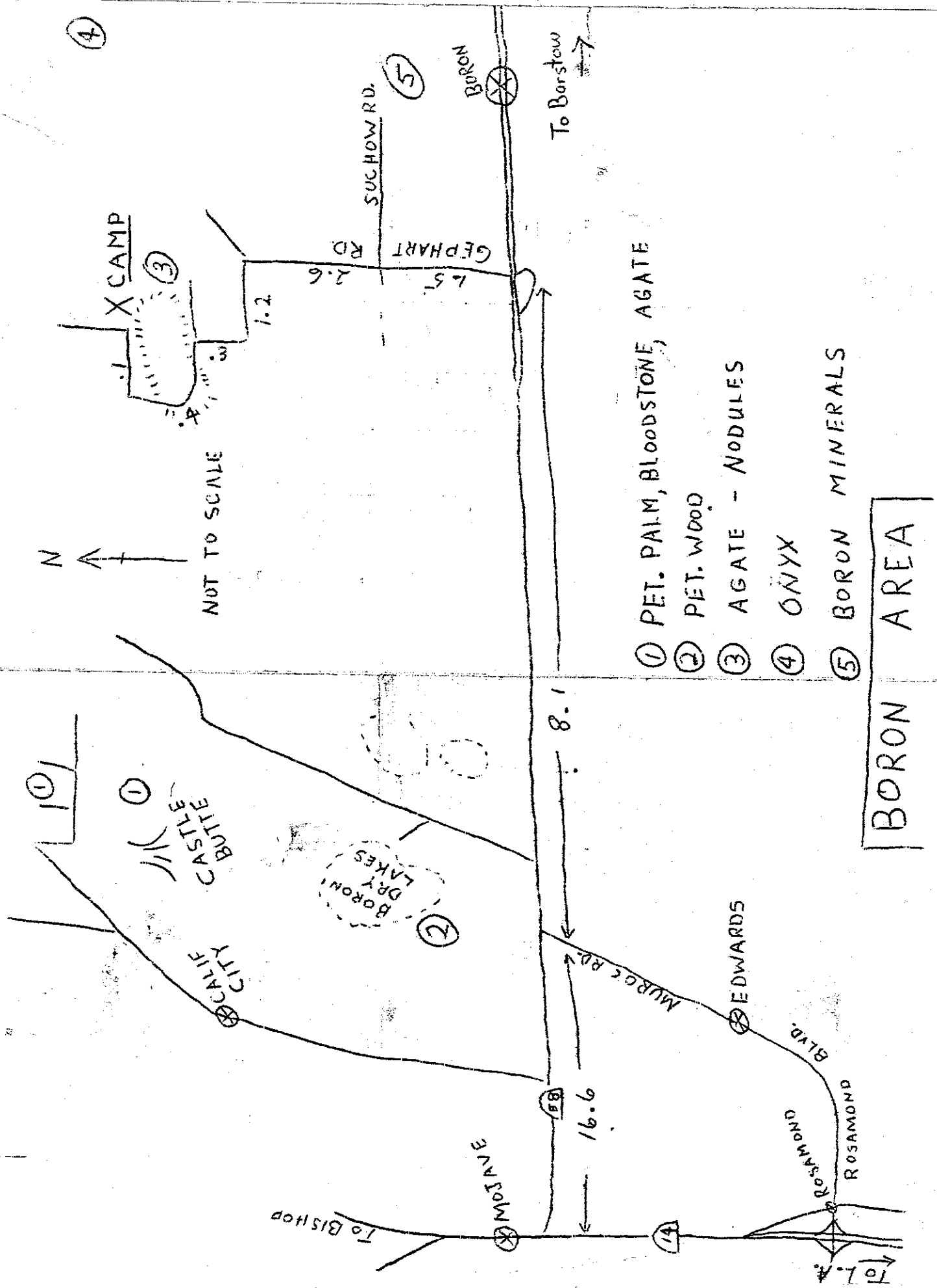


SAN BERNARDINO FWY

RACETRACK

MAP 0085A

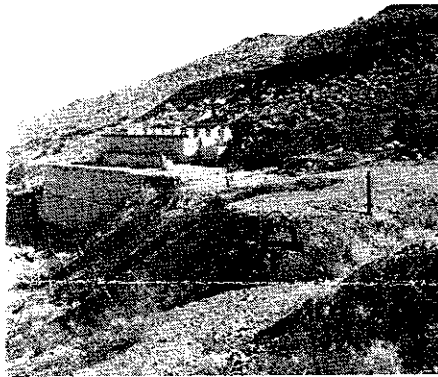
MAP 0035 B



ORANGE BLOSSOM CHRYSOCOLLA

TRY AN ABANDONED GOLD MINE
IN CALIFORNIA'S BRISTOL MOUNTAINS

by LORAN E. PERRY



The Orange Blossom Mine in the Bristol Range in Southern California has been probed by comparatively few rockhounds for its chrysocolla values and intriguing mementos. A myriad of

Little remains of the abandoned Orange Blossom gold mines except concrete foundations and litter left by 400 employees.

speculative interest still abound at the old mine to a degree that makes the area a "must" in any mineral collector's planning.

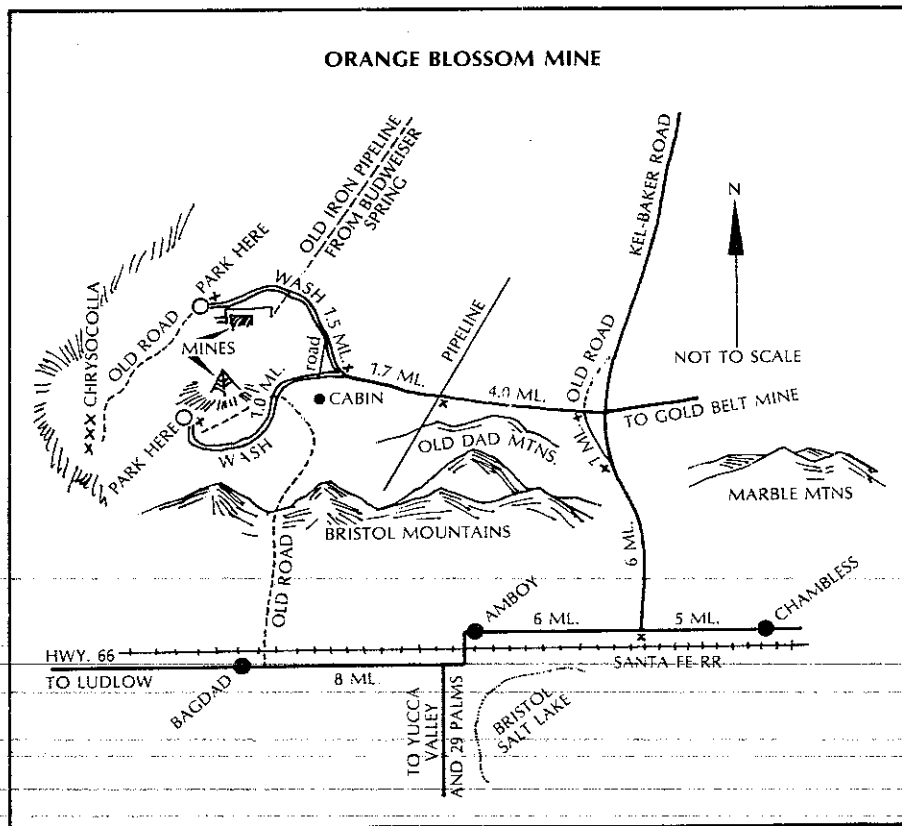
Several years ago Eunice and Carl Linderoth of the Palomar Gem and Mineral Society were well-known for their chrysocolla pendants, cabochons, and jewelry. Although it was not generally known where material came from, the couple finally disclosed that they were gathering their cutting material at the Orange Blossom Mine. A gold operation, the mine was auspicious and comprehensive as mining activities go. It was discovered in the early 1800s and shut down in 1910.

Concentrates from the Orange Blossom were hauled southward over the mountain to Bagdad on the Santa Fe Railroad, some eight miles over a road of no return. It was so steep that mule-drawn ore wagons were compelled to return to the mine via Amboy and the Kel-Baker Trail, not a road at that time.

Actually the Orange Blossom Mine consists of two distinctly different locations one-half mile apart. One is the original discovery shaft, known as "Orange Blossom No. 1," and the other is known as "Orange Blossom Extension," sometimes called "El Dorado." Both were prolific and productive in gold values, which were mostly free-milling with two stamp mills in operation. The original Orange Blossom Mine features a 10-stamp mill, and its counterpart one-half mile north on the other side of a low ridge, had a 20-stamp mill. The ore averaged about \$30 a ton at gold's depressed value of the day, and only conjecture may estimate the millions of dollars the mine produced in its lifetime. Only a wild imagination could guess what the Orange Blossom would have produced by today's gold values.

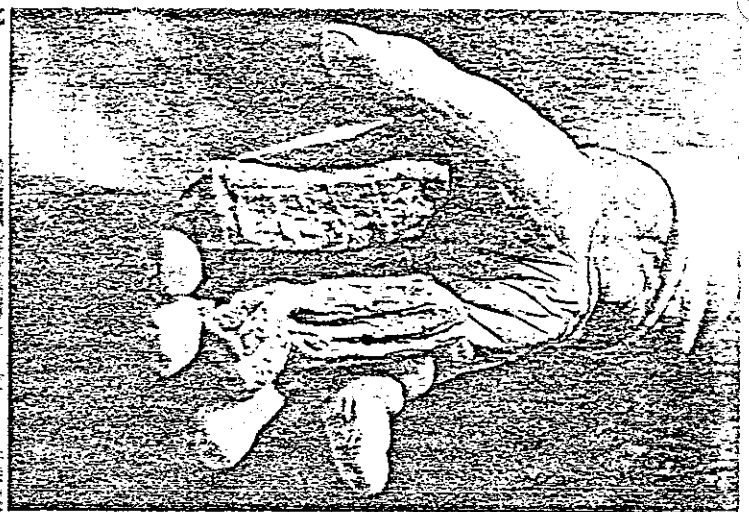
Some 400 people lived at and

Continued on page 44

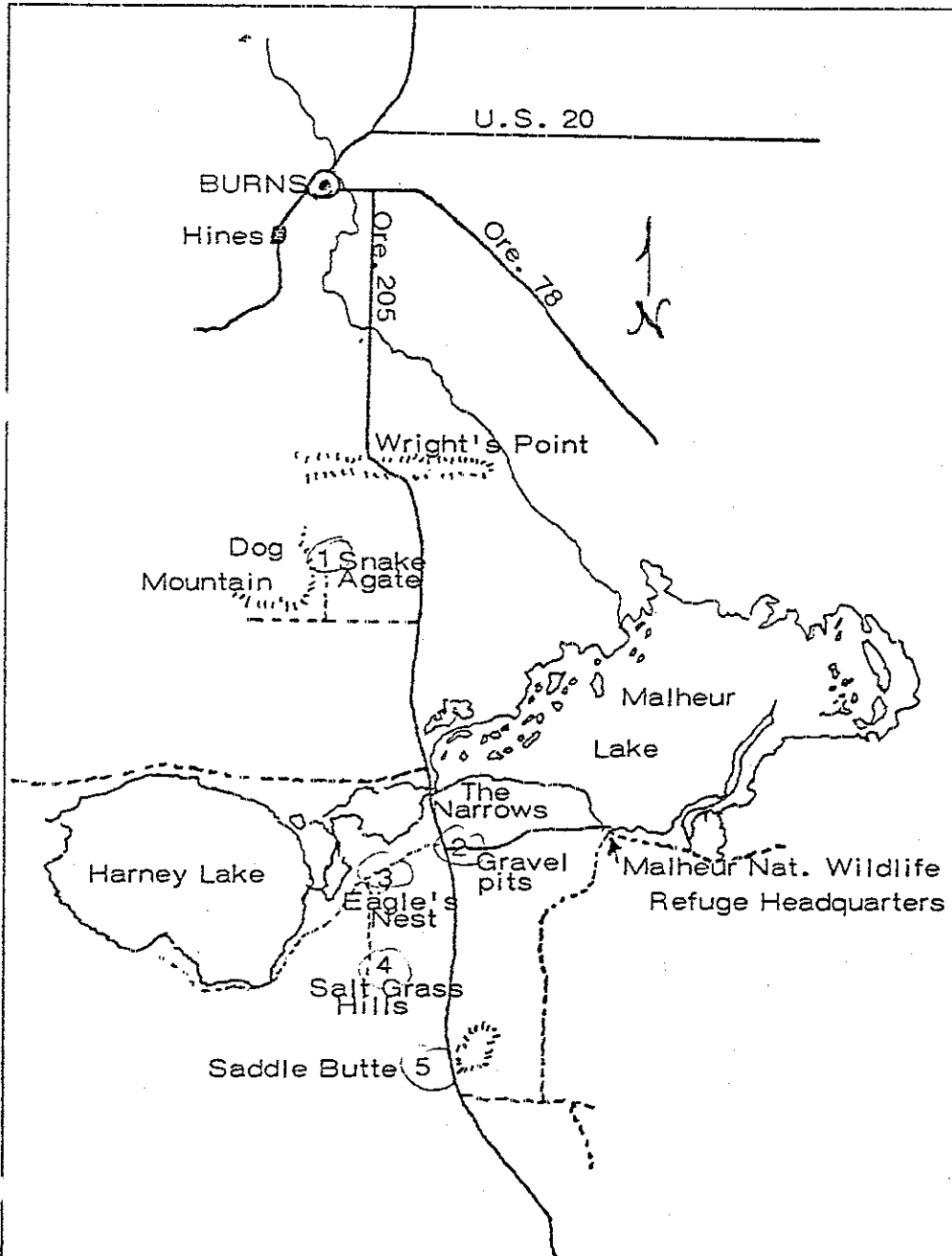




Left—A beautiful specimen of gnarled root collected by the author at Eagle's Nest.



Right—A couple of Eagle's Nest limbs just as they came from the ground.



Map showing major roads from Burns, Oregon.

A CUT ABOVE THE REST
RAYTECH
BLUE BLAZER
DIAMOND
BLADES

Interlock construction
 assures dense
 distribution of laboratory
 diamonds on sides as
 well as rim. Choose
 Raytech lapidary blades
 for

SPEED • SMOOTHNESS
SERVICE • SELECTION
SATISFACTION

Paced with ordinary blades
 example:
 6 x .025 \$12.95
 10 x .040 \$25.50

R Send for new catalog

RAYTECH INDUSTRIES, INC.
 P.O. Box 84, Stafford Springs,
 Connecticut 06076

Auxiliary loupe for either eye adds 2½X.

MAGNIFIES
IN
3-DIMENSIONS
PEER®
BINOCULAR
MAGNIFIER
NOW \$10.50
ONLY

Adjusts easily to any head size.

MADE IN U.S.A.

Its lighter-than-air construction and padded headband, makes this magnifier the most comfortable yet available. It does not bind even if you wear glasses. The wide clear lens plate, and open bottom permit a great amount of light to reach the eye. The lenses in the PEER Binocular Magnifier are ground from the finest optical glass.

No. 22-845—BINOCULAR MAGNIFIER. Working distance 10", 2½ power..... \$10.50
 No. 22-851—AUXILIARY LOUPE, 2½ X. Attaches for either eye. Flips up when not in use..... 21

ORDER FROM YOUR DEALER

SHAMMEL RIGLANDER & CO., INC.
 235 Madison Street • New York, N.Y. 10011